



PlayStation

®

NTSC U/C

©

PlayStation



CONTENT RATED BY ESRB

SLUS-00653



ROCKET FIGHTER

ポケット
ファイター

TM

CAPCOM

A Special Message from CAPCOM ENTERTAINMENT

Thank you for selecting POCKET FIGHTER, CAPCOM'S hit arcade game for the Sony PlayStation® game console. We at CAPCOM ENTERTAINMENT are proud to bring you this thrilling new addition to your video game library.

WARNING: READ BEFORE USING YOUR PLAYSTATION® GAME CONSOLE.

A very small percentage of individuals may experience epileptic seizures when exposed to certain light patterns or flashing lights. Exposure to certain patterns or backgrounds on a television screen or while playing video games, including games played on the PlayStation game console, may induce an epileptic seizure in these individuals. Certain conditions may induce previously undetected epileptic symptoms even in persons who have no history of prior seizures or epilepsy. If you, or anyone in your family, has an epileptic condition, consult your physician prior to playing. If you experience any of the following symptoms while playing a video game – dizziness, altered vision, eye or muscle twitches, loss of awareness, disorientation, any involuntary movement, or convulsions – IMMEDIATELY discontinue use and consult your physician before resuming play.

WARNING TO OWNERS OF PROJECTION TELEVISIONS:

Do not connect your PlayStation game console to a projection TV without first consulting the user manual for your projection TV, unless it is of the LCD type. Otherwise, it may permanently damage your TV screen.

HANDLING YOUR PLAYSTATION DISC:

- This compact disc is intended for use only with the PlayStation game console.
- Do not bend it, crush it or submerge it in liquids.
- Do not leave it in direct sunlight or near a radiator or other source of heat.
- Be sure to take an occasional rest break during extended play.
- Keep this compact disc clean. Always hold the disc by the edges and keep it in its protective case when not in use. Clean the disc with a lint-free, soft, dry cloth, wiping in straight lines from center to outer edge. Never use solvents or abrasive cleaners.

CAPCOM®

CAPCOM ENTERTAINMENT, INC.
475 Oakmead Parkway, Sunnyvale, CA 94086

© CAPCOM CO., LTD. 1998 ALL RIGHTS RESERVED

© CAPCOM U.S.A., INC. 1998 ALL RIGHTS RESERVED.
POCKET FIGHTER is a trademark of CAPCOM CO. LTD. CAPCOM is a registered trademark of CAPCOM CO., LTD. PlayStation and the PlayStation logos are registered trademarks of Sony Computer Entertainment Inc.

FIGHTERS EDGE HINT LINE

Hints are available:

1-900-976-EDGE (1-900-976-3343)

\$.99 per minute for 24-hr. pre-recorded information.
\$1.35 per minute for live Game Counselor assistance.
From Canada: 1-900-677-2272 (\$1.35 per minute).

Must be 18 years or older, or have parental permission. Game Counselors available Monday-Friday 8:00 a.m. - 5:00 p.m. Pacific Standard Time. This hint line supports games produced by CAPCOM ENTERTAINMENT, INC. only. No hints will be given on our Consumer Service line. You must have a touch-tone phone to use this service.

CAPCOM ON-LINE

<http://www.capcom.com>

CompuServe users, select Go. . .then type: capcom

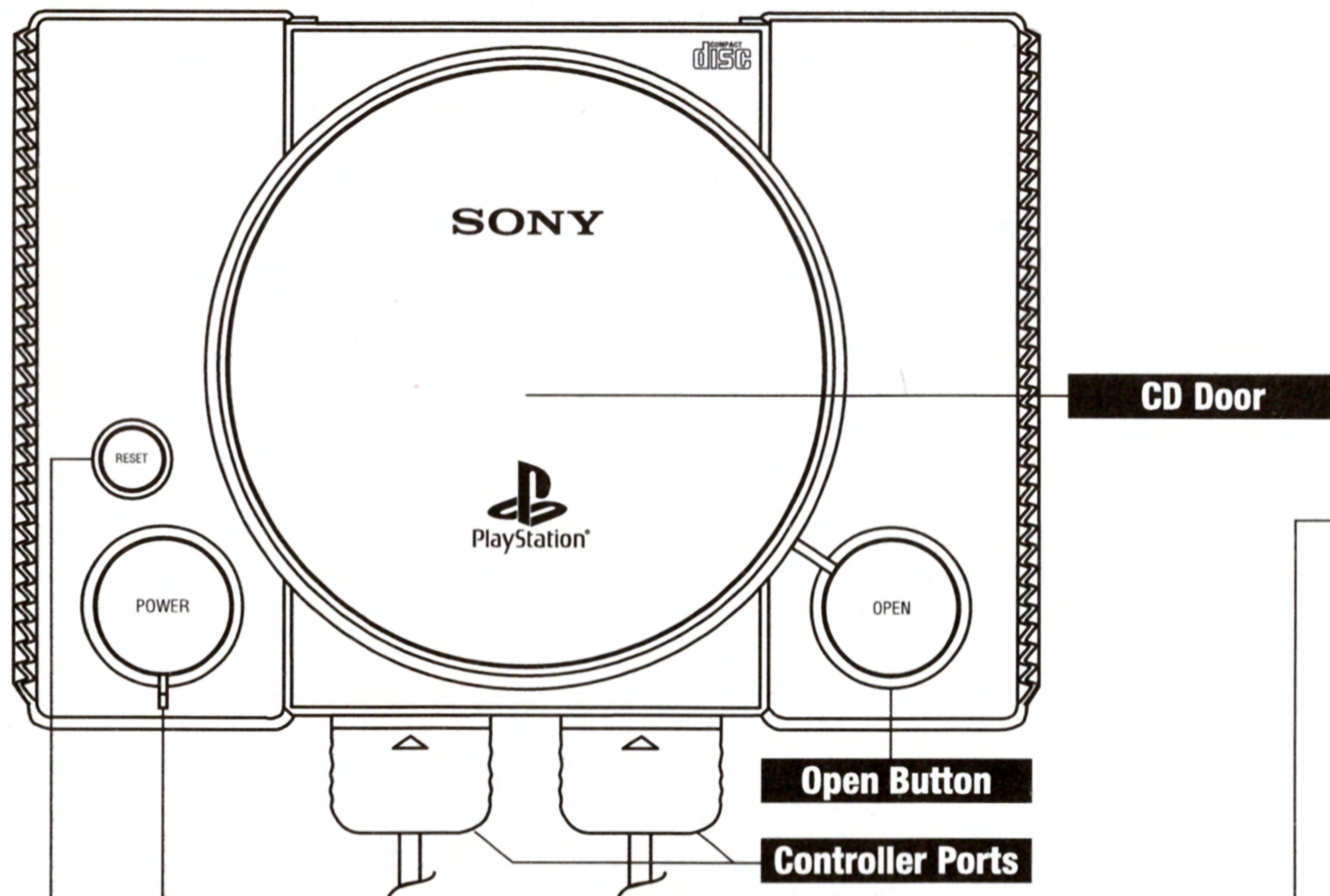
Visit our website to see all the great new CAPCOM products or to play certain games on-line! Or just e-mail us at megamail@capcom.com for help or to find out what's new at CAPCOM!



CONTENTS

Basic Controls	2
How Screens Look	4
Rules & Starting The Game	5
Pocket Fighter Modes.....	6
Options & Saving	8
Back Up	9
Edit Fighter	10
Items.....	13
Tips & Tricks.....	14
Character Descriptions.....	17
Fighters Edge	23

HOW TO OPERATE THE CONTROLLER



Reset Button

Power Button

Open Button

Controller Ports

CD Door

Directional Button

Choose mode; you can set or change your option screen at this time

Character screen - choose your player there

Allows you to move your character during game play
(jump, dash, block, etc.)

By combining different directional buttons, you can come up with new moves and better ways to defeat your opponent

L1 BUTTON

Quick Continue (only during free battle)

L2 BUTTON

Not Used

R1/R2 BUTTON

Not Used

□ BUTTON (P)

Punch Attack
Punch / press this button to punch

X BUTTON (K)

Kick Attack
Kick / press this button to kick

Other Functions
Decision button / Gives you the menu during paused game

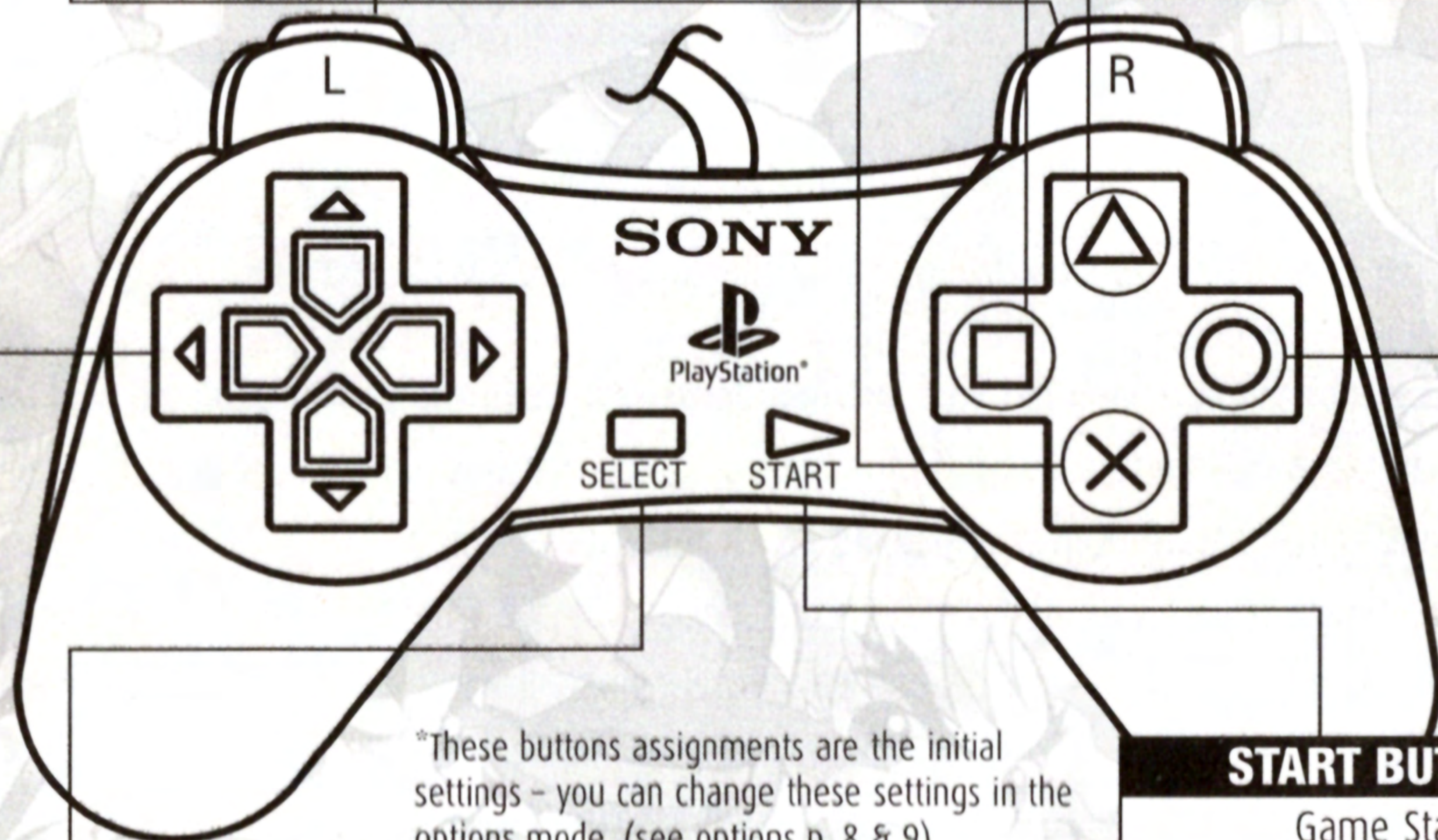
△ BUTTON

Taunt / can also be used to change items

Other Functions
Cancel Button

○ BUTTON (S)

Special Attack
Special / guard crush / Cancel

**SELECT BUTTON**

Select Button

*These buttons assignments are the initial settings - you can change these settings in the options mode. (see options p. 8 & 9).

To return to the title screen, press the Select button & Start button simultaneously.

2 Player Mode. You can play Pocket Fighter with 2 people. To do so, you will need an additional controller (sold separately) - be sure to connect the 2nd controller to your console before turning it on.

To access the Options screen, press X button while the game is paused.

START BUTTON

Game Start
Use this button to begin a game

Pause Function
Press this to pause game;
press again to continue

Adding extra functions during gameplay. If you have an extra controller, the Start button can be used to add it to your game setup

HOW SCREENS LOOK



- 1 Score & number of victories...when playing against the computer, shows your current score. In 2 player mode, this shows number of wins.
- 2 Strength gauge...when you take a hit, your strength decreases. When completely depleted, you lose.
- 3 Time remaining...shows time remaining. If time reaches 0, the match is judged by strength remaining.
- 4 (Character)Lives remaining...# of lives remaining for Character (characters).
- 5 Mighty Combo Gauge...when you use normal & extra special skills, your mighty combo gauge will rise (see pg. 15).
- 6 Items...when you attack an item-carrier, some things will appear. If you pick up items, you can use them to do special things.
- 7 Items in your possession...shows items currently in your possession. You can use items which appear big, and you can also change your items (see page 13).
- 8 Gems...appear when you are attacked by an opponent or when you attack a gem box or item-carrier.
- 9 Gem gauge...shows the increased level of special skills acquired by taking gems. As the gauge increases you advance up a level.
- 10 Character names...use this for your Character Name.
- 11 Bonus...a message appears here when you perform special moves, i.e. mighty combo.

RULES AND STARTING THE GAME

RULE (GAME RULES)

The rules explained on this page are based on the arcade game. For details about other modes, see pages 6 & 7.

Game Make-up: one round is limited to 99 seconds. During that time if you deplete your opponent's strength to 0, you will have knocked him out and you win.

How to win: based on 3-round match, whoever wins the first two in a row is the winner (options change this function).

Ties or draws: when time runs out, the player with the most strength left wins.

GAME START (STARTING THE GAME)



At the title screen, put the cursor on POCKET FIGHTER and then press the **Start button**. The Mode screen will appear. Choose your mode using the Directional button and press the **X button**.



At the Character screen, choose your Character and game speed.

* If you've already chosen your speed at the mode screen, you may skip this.



After choosing all your options, the battle begins. In a 2 player game, press the **Start button** on the second controller to join in.

POCKET FIGHTER MODES



BATTLE MODE

When you choose Pocket Fighter in the title screen and press the **Start button**, the Battle Select menu appears. Choose the mode you want to play in with the Directional button and use the **X button** to select your choices.



ARCADE BATTLE

Arcade Battle: 1 player play; 2 player "join in the fight" function

The CPU is your opponent and you survive elimination matches. After you have defeated all 8 opponents, you win. If you are defeated at any time, you can choose to continue or start a new game. While player one is playing, you can press the **Start button** on the second controller to join in the fight.



FREE BATTLE

Free Battle: 1 player & 2 player fighting mode.

In this mode, player 1 and player 2 each choose a character and fight each other. Each time you fight, you choose a character (after the end of a fight, hold the **L1 button** down to automatically get the same character in the same stage - this is called "quick continue"). In addition, player 1 and player 2 can use the same character.



When you choose Free Battle, you will then move to the character selection screen. There you can choose the character you wish to play and their handicap. Next, the Stage Select screen appears. Here you can choose your stage, game speed, and rules. When you have made all your selections, press the **Start Button** and the game will start.



RUNNING BATTLE

Running Battle: 1 player only mode

Try to defeat as many of the 12 opponents as you can before your strength or time runs out.

Running Battle Rules

- Each match is 1 round.
- After each match, your strength is restored based on the quantity of gems in your possession or how quickly you defeat your opponent.
- Your Mighty Combo gauge and items go with you into the next round.
- If your own strength gauge is depleted, then the game is over.
- You can't continue and you cannot use "join-in-the-fight function".

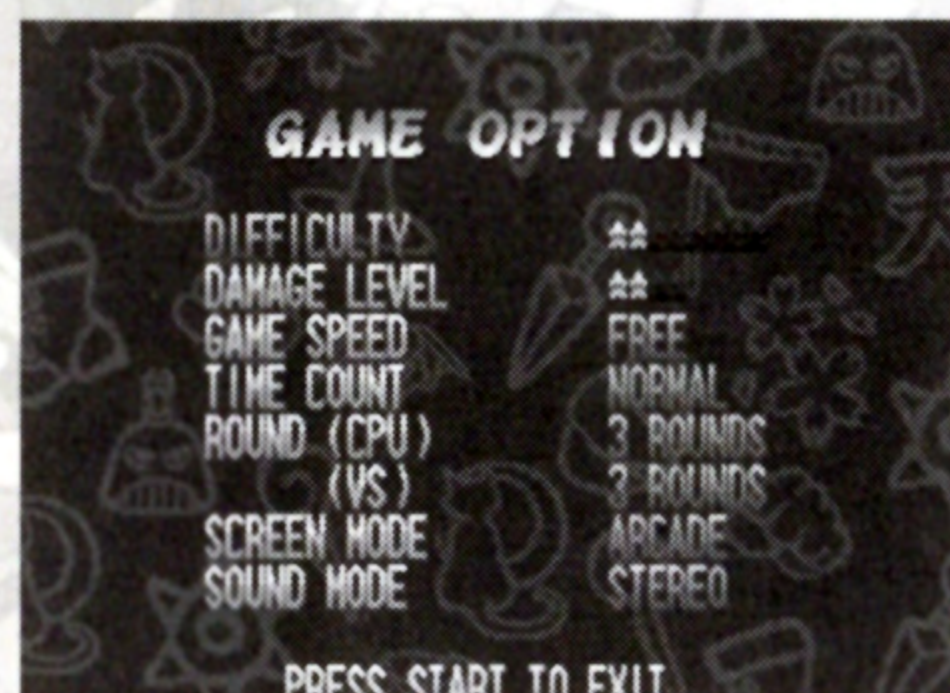


TRAINING

Training: 1 player only mode

This is a mode that lets you practice the game. When you choose "Training Start" and press the **X button**, practice begins.

OPTIONS AND SAVING



OPTION

This modifies several game settings. Move the Directional button up and down to choose things you want to change and then the Right and Left Directional buttons to switch them. There is also an option to make changes while the game is paused.

SETTING (GAME OPTION/GAME SETTING/RULE SETTING)

Difficulty: Sets level of difficulty for games played against the computer in arcade battle.

Damage Level: Sets the level of attack power.

Time Count: Changes the time limit on each round.

Round: Changes the number of rounds for a computer match set or a 2 player battle.

Screen mode: Changes the size of the screen (if you set it to Arcade you may not be able to see your entire screen on your television).

Sound: Choose your sound output to be stereo or mono depending on your TV.

Player (Free Battle mode only): Select a human or computer player.

M. Combo Gauge (Free Battle and Training modes): Set your gauge to a level 1-9 at the start of the game.

Gem gauge (Free Battle and Training modes): Set your gauge to a level 1-3 at the start of the game.

Items (Free Battle and Training modes): Allows you to select your items you start with.

Speed (only in Training mode): Sets game speed.

CPU ACT (only in Training mode): Sets computer movement.

Guard (only in Training mode): If computer (opponent) is damaged this determines whether or not the computer guards itself.

S. Fall (Training mode only): When CPU fighter is thrown, you can set this to have him fall in a certain manner without hurting himself.

Screen adjust (only when game is paused): Moves the entire screen around (in Arcade mode, the entire screen might not be visible).



Quit (only when paused): Takes you out of the game and returns you to the Title screen.

BUTTON CONFIGURATION

Changes the arrangement of the attack buttons during battle.

BACK UP



BACK UP

In order to save the game data, you must have an optional PlayStation Memory card. Before you save, insert the card in the Memory card slot.

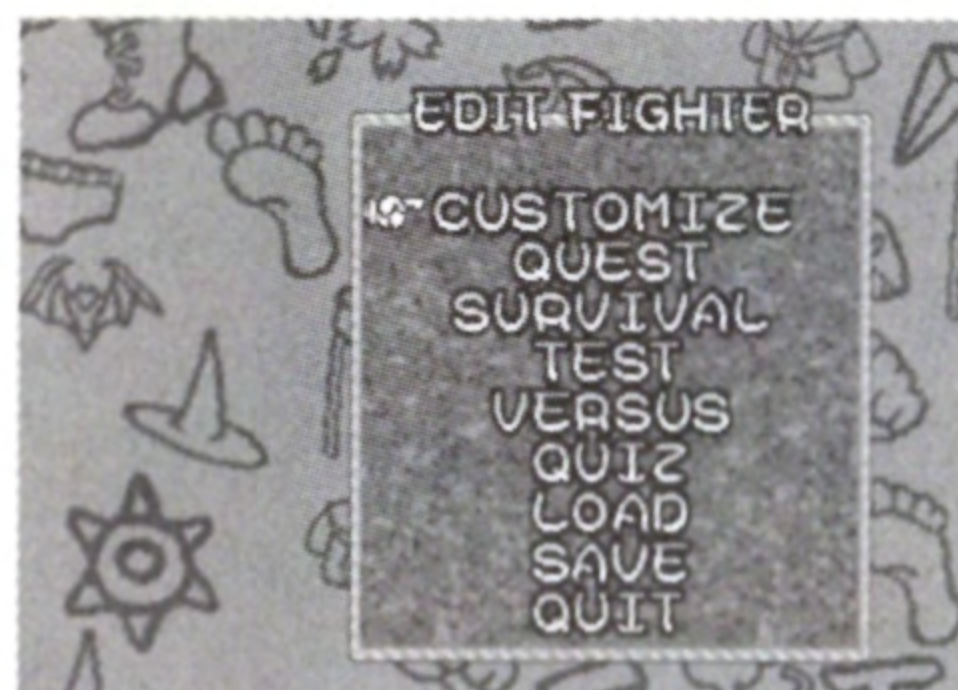
SAVE DATA: Save your battle results and options on your Memory card. Saving uses one block.

LOAD DATA: From the Memory card, you can read all of the data you stored.

Note: You cannot save or load any data for the Edit Fighter on the Back Up menu. For saving or loading Edit Fighter see page 12.

EDIT FIGHTER

MAKE A WARRIOR



Edit Fighter allows you to develop your own custom character based on a series of questions posed by Tessa that determine attributes such as personality and skills.

QUIZ

Begin by choosing QUIZ from the menu. The first question you will need to answer is if you want to create a character ("OK lets do it" or "No thanks"). If you choose to do it, then TESSA will then ask, "Would like to choose your own character?". If not, then you return to the Edit Fighter menu. If you choose to pick your own character, select one by using the Directional button pad. If Tessa picks the character, she will ask you two questions.



Once these questions are answered your character will be chosen automatically by Tessa.



Now that you have a character, you must now choose a nickname. Move the cursor using the Directional buttons to choose letters and press the **X button**. Nicknames must be 6 letters or less. After you've chosen the name, press the **START button** or choose "FINISH."



This begins your character evaluation section. Tessa will ask you a series of 10 questions that allows her to choose your character attributes and skills. Answer carefully!

After the character evaluation is completed, a summary of your new character's personality/attributes are displayed.

CUSTOMIZE

You can change your characters abilities. Your character receives 4 cards to start (only three are useable at one time). Choose the card that you want to move and exchange it, or put the cursor on the place you want to put it and press the **X button**. Complete the setup by choosing **END** or pressing the **Start Button**. The **Triangle button** cancels, the **Circle button** explains the card. You can collect more cards when you win certain battles.



ACTION CARDS

These mainly change action patterns. The character received two from the results of the character evaluation. You can obtain more cards by fighting in the QUEST mode or during survival battle.

ABILITY CARDS

These change ability values. You also received a few of these cards from the results of the character evaluation. You can get these via street battles in QUEST mode.

PREMIUM CARDS

These raise the character's abilities dramatically. You can get these by winning a set number of survival battles.



A password is given to you when you exit from the customize menu. You can use this password in the Versus mode.

QUEST

Pit your character against the computer. In this CPU only battle, the winner can steal the opponent's character cards.

Choose a character by pressing the **X Button**. The data for your opponent will appear. You can then switch characters (with the **L1/R1 button**) until you find one with a card that you wish to acquire. You can also switch out your cards to play with the best skills for the opponent you have chosen. The fight will start and play automatically.

SURVIVAL BATTLE

Once picking this option, the first screen shows all opponents and how many times you have defeated each. Choose setup to customize your character abilities, exit to return to Edit Fighter menu, or Start to begin auto battle.

TEST BATTLE

This mode allows you to choose a character to play against your edited character.

VERSUS BATTLE

Two player battle mode. You can either play your edited character against another standard character. Or if a friend has a saved edited character also, that can be loaded up and the battle can be fought between the two edited characters. Password data is useful here - you got this information in the CUSTOMIZE menu.

LOAD

Load a previously saved edited character from your memory card.

SAVE

Save your edited Character onto the memory card.

NOTE: You cannot save or load any data for the Edit Fighter on the Back Up menu. For more information see page 9.

ITEMS

ITEMS



FOOD



(gives back your strength)

Item Bubbles: There are 7 types of item bubbles (you can have up to 3). Change the items you are going to use with the "taunt" button.

FLAME



Burns up whatever it hits

ICE



Freezes whatever it hits

POISON



Causes damage

BOMB



Blows up whatever it hits

BANANA



Slip and fall

ROCK



Turns whatever it hits into stone

LIGHTNING



Lightning can shock you

TIPS & TRICKS



POCKET FIGHTER BASIC KNOWLEDGE

Here are some simple tips and tricks to help you enjoy Pocket Fighter even more.

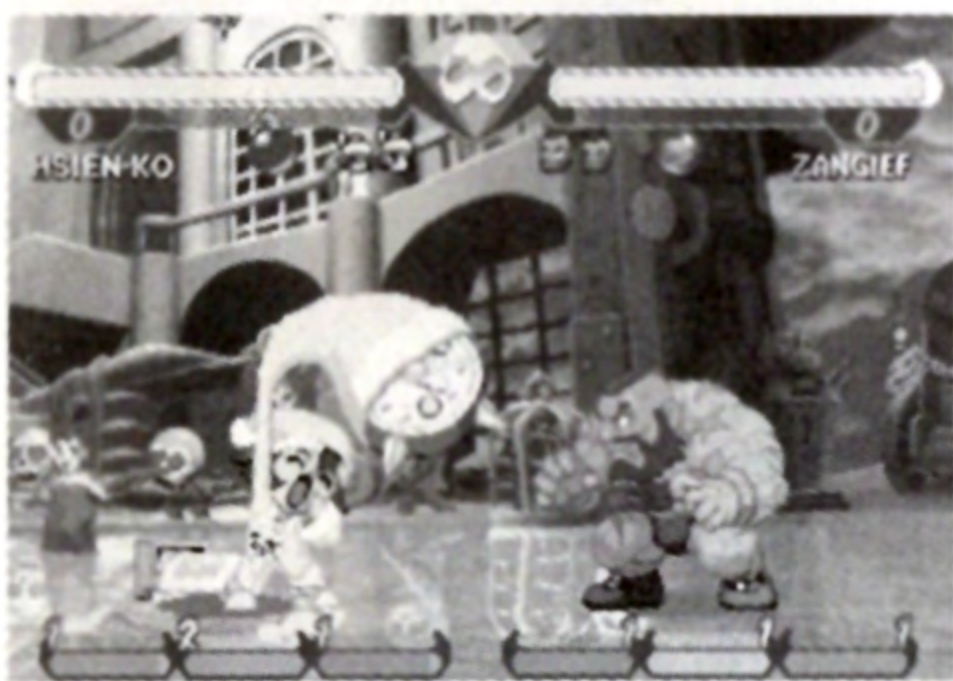
SUREFIRE WAY TO INCREASE YOUR LEVELS

*Collect Gems to increase your gauges.

*Increase your levels according to the different color of gems.

*When you get to level 3, your ability to defeat your opponents increases dramatically.

GUARD CRUSH



Disable opponent's block. Guard crush with the **Circle button**. When you hit, you can steal gems from your opponent.

The effectiveness of guard crush hinges on how many gems you have collected. The more you collect, the more you can steal from your opponent. You can return a guard crush by blocking and pressing the **Circle button**.

Special gems are a fast way to damage your opponent and obtain gem boxes and guard crushes.

GEM TYPES



Power gem — Increases your gauge by 1 unit

The Rainbow gem — Increases your gems and combinations

FLASH COMBO

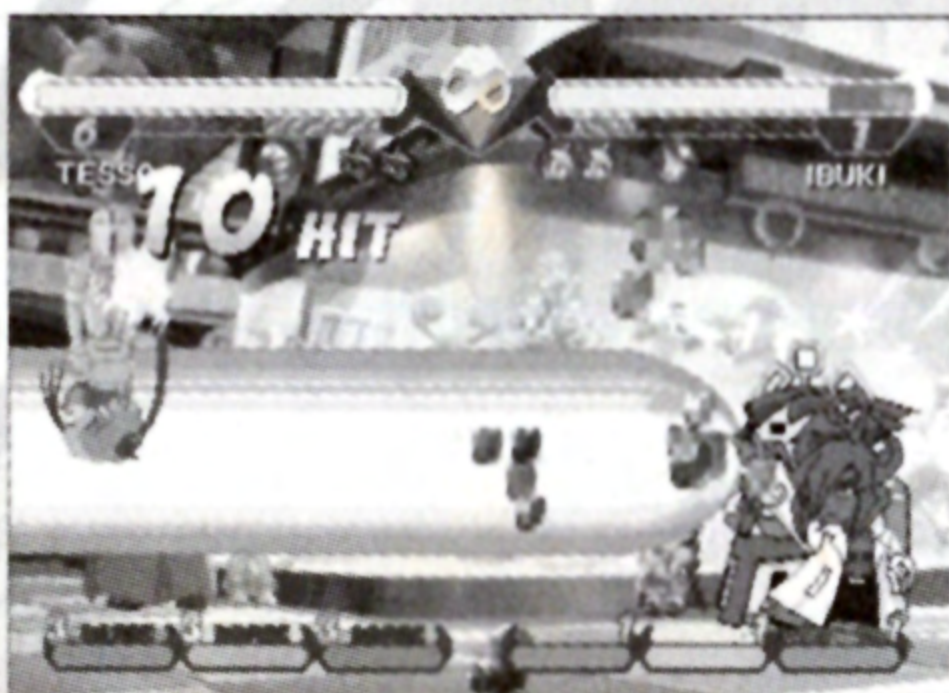
TRY THESE OUT FOR FUN.



To perform a Flash Combo, you must first attack your opponent with a **Punch button**, then press **Punch, Kick or Circle buttons** in various orders. If done correctly, these buttons will link together, creating a Flash Combo which will change your costume and attack techniques. Even though your opponent may block your first attack, you can still continue with the rest of the Flash Combo.

MIGHTY COMBO

MASTERING THESE COULD BE THE KEY TO SUCCESS.



When you attack and pick up gems, your Mighty Combo gauge will increase.

- You can increase your level to a maximum of 9.
- Use your combinations to blitz your opponent.
- A reminder: The commands are different for each character (refer to pages 17-23).

SHARED COMMANDS

THE GRAB & THROW TECHNIQUE

When you're close to your opponent, you can press the **Punch & Kick buttons** simultaneously to throw your opponent. Some characters even have air throws.

JUDO FALL

When you are flying through the air, you can adjust your posture so you can land on your feet. When you land on your feet, you can resume attacking.

CHASE AND ATTACK

This technique allows you to go after an opponent that you've already knocked down.

When you've knocked your opponent down press **Up + Punch** or **Kick**.

MEGA CRUSH AND COUNTER-CRUSH

When you are thrown in the air by your opponent or being attacked by a Flash Combo, you can simultaneously press the **Punch + Kick + Special buttons** to exchange your gems and combo gauge for a powerful attack.

THE DASH AND DASH ATTACK

Double tap quickly on either the left or right directional buttons to allow your character to dash. While your character is dashing, use a combination of your attack buttons to create a new move.

ITEM BUBBLE ATTACK

To throw your item bubble, press the **Kick + Special buttons** together. Use the direction pad to control the distance of the item bubble.

RYU

A serious youth who is pure of heart.



MOVES	
Fireball	↓ ↘ ⇨ + P
Dragon Punch	⇨ ↓ ↘ + P
Hurricane Kick	↓ ↙ ⇨ + K
MIGHTY COMBO	
Vacuum Hurricane Kick	↓ ↙ ⇨ + S
Super Fireball	↓ ↘ ⇨ + S

KEN

A fighter with amazing spirit and an even larger ego.



MOVES	
Fireball	↓ ↘ ⇨ + P
Dragon Punch	⇨ ↓ ↘ + P
Hurricane Kick	↓ ↙ ⇨ + K
MIGHTY COMBO	
Rising Dragon Punch	⇨ ↓ ↘ + S
God Dragon Punch	⇨ ↓ ↙ + S

CHUN-LI

A good detective on the mysterious trail of Shadowloo.



MOVES	
Fireball	↔↔↓↘↔ + P
Flying Rising Kick	↔↓↘ + K
Lightning Kick	Rapidly press K button
MIGHTY COMBO	
Super Fireball	↓↘↔ + S
Cycle Crush	↔↘↓↔↔ + S

SAKURA

A high school student with skilled fighting techniques.



MOVES	
Fireball	↓↘↔ + P
Flower Umbrella	↔↓↘ + P
Spring Fire Assault	↔↔↓↘↔ + K
MIGHTY COMBO	
Super Fireball	↓↘↔ + S
Scattered Spring Rain	↔↓↘ + S

MORRIGAN

A beautiful succubus who loves excitement and fashion.



MOVES	
Soul Fist	↓ ↘ ⇨ + P
Shadow Blade	⇨ ↓ ↘ + P
Parasite Roll	↓ ⇨ ⇩ + K
MIGHTY COMBO	
Darkness Illusion	⇩ ⇨ ↓ ↘ ⇨ + S
Death Blade	⇨ ↓ ↘ + S

HSIEN-KO

The ghost of a chinese entertainer.



MOVES	
Enveloping Darkness	↓ ↘ ⇨ + P
Echo	↓ ⇨ ⇩ + P
Grave Sword	⇩ ⇨ ↓ ↘ ⇨ + K
MIGHTY COMBO	
Thunderstrike	⇨ ↘ ↓ ⇨ ⇩ + S
Returning Globe	↓ ↘ ⇨ + S

FELECIA

A cat woman with a powerful attack.



MOVES	
Sand Splash	↓ ↘ ⇨ + K
Rolling Buckler	↓ ↘ ⇨ + P
Delta Kick	⇨ ↓ ↘ + K
MIGHTY COMBO	
Crazy for You	⇨ ↘ ↓ ↗ ⇨ + S
Please Help Me	⇨ ↗ ↓ ↘ ⇨ + S

TESSA

Searching for the mysteries of life; She is a curious scholar of magic.



MOVES	
Dragon Blow	↓ ↘ ⇨ + P
Swords	⇨ ↓ ↘ + P
Dragon Roar	↓ ↘ ⇨ + K
MIGHTY COMBO	
Assault Cannon	↓ ↘ ⇨ + S
Dragon Apocalypse	⇨ ↓ ↘ + S

ZANGIEF

A star wrestler from Russia known for his great power.



MOVES	
Screw Piledriver	↔↘↓↙↖↗↑↘↔+K+P
Double Lariat	P + S
Banishing Flat	↔↓↘ + P
MIGHTY COMBO	
Heavy Bite	↔↙↓↘↔ + S
Final Atomic Buster	↔↘↓↙↖↗↑↘↔ + S

IBUKI

A high school student whose love for ice cream brings her to the big city.



MOVES	
Knife Throw	↓↘↔ + P
Wind Slash	↔↓↘ + K
Flying Sparrow	↔↓↙ + K
MIGHTY COMBO	
Mysterious Bird	↓↘↔ + S
Frog Kiss	↔↙↓↘↔ + S

AKUMA

Martial arts training is everywhere and he is always looking for more strength.



MOVES	
Fireball	↓ ↘ ⇒ + P
Dragon Punch	⇒ ↓ ↘ + P
Hurricane Kick	↓ ↙ ⇐ + K
MIGHTY COMBO	
Super Dragon Punch	⇒ ↓ ↘ + S
Super Fireball	⇒ ↘ ↓ ↙ ⇐ + S

DAN

Call me "the master"!



MOVES	
Fireball	↓ ↘ ⇒ + P
Dragon Punch	⇒ ↓ ↘ + P
Dan Kick	↓ ↙ ⇐ + K
MIGHTY COMBO	
Super Fireball	↓ ↘ ⇒ + S
Old Man Blast	⇐ ↙ ↓ ↘ ⇒ + S

FIGHTERS EDGE



JOIN FIGHTERS EDGE. EARN KILLER STUFF.

Now you can join the ranks of the world's elite fighters in Capcom's Fighters Edge*. Believe it or not, it's free. Collect Fighters Edge proof-of-purchase points every time you buy a Fighters Edge game to earn amazing stuff like shirts, a skateboard or even a CD player...All kinds of cool gear! (You will receive a complete list of rules and regulations, a complete list of awards, point values and redemption information when you receive your Fighters Edge Kick-off Kit).

Don't fight it. Sign up today and you'll get a Fighters Edge Kick-off Kit.

Just complete the entry form on the next page or send a 3" X 5" card with your name, address, and phone number to: Fighters Edge, Capcom Entertainment, 475 Oakmead Parkway, Sunnyvale, CA 94086

For more information check out www.fightersedge.com

NAME

ADDRESS

CITY

STATE

ZIP CODE

PHONE NUMBER

DATE OF BIRTH

CAPCOM[®]

**FIGHTERS
EDGE**

GAMEPRO
THE WORLD'S LARGEST MULTIPLATFORM GAMING MAGAZINE

Offer valid 6/1/98 to 1/31/99. Maximum 2 awards per name and/or address. To claim awards send a completed prize redemption form, Fighters Edge proof-of purchase points (or original UPC code) and shipping and handling fees to Capcom Entertainment (See www.fightersedge.com for complete details). Award merchandise is subject to change and subject to availability while supply lasts. Allow 10-12 weeks for delivery. Items may be shipped separately. Extra points on orders will not be refunded. Points cannot be transferred or sold to another party for use for any other purpose. Fighters Edge points can not be redeemed for cash. Capcom Entertainment may cancel, rescind or extend this offer at any time. Points are subject to verification. Only original Fighters Edge proof of purchase points or original UPC codes are valid from retail packages or from authorized Fighters Edge certificates. No reproductions allowed. Points valid only once per game purchase per person. The Fighters Edge program is operated by Capcom Entertainment and is open to residents of the United States and Canada excluding Quebec. Fraudulent claims will be voided. Proof of mailing does not constitute proof of delivery. Capcom is not responsible for lost, incomplete, damaged or illegible claim forms. Certified mail is recommended for orders. Sweepstakes winners will be determined in a random drawing from registered Fighters Edge members. No purchase necessary. Odds of winning depend on number of registered Fighters Edge members. Sony Computer Entertainment is in no way affiliated with this program. Employees of Capcom Entertainment, its agencies, vendors and their immediate family members are not eligible for this offer. All decisions of Capcom Entertainment on all matters relating to this promotion are final. Recipients agree that awards are presented on the condition Capcom Entertainment, GamePro Magazine, Sony Computer Entertainment, their affiliates, subsidiaries, divisions or related companies, have no liability whatsoever, for any damages, injuries, losses or expenses of any kind resulting from acceptance, possession or use of the award. Award recipient is responsible for any and all Federal, State and local taxes if necessary. Offer is only good in United States and Canada excluding Quebec. Void where prohibited by law. Other restrictions may apply. All orders must be postmarked by 1/31/99.

*Fighter's Edge[®] is a registered trademark of GamePro magazine, the world's largest multiplatform gaming publication and the official magazine sponsor of the Capcom Fighters Edge promotion. Reproduction of Fighter's Edge and/or Fighters Edge name/logo in whole or part without prior written permission by GamePro Magazine is prohibited.

Credits

Translation: Marion Clifford, Katie Bridges/Benneman Translation Center, and Hanako Watanabe; *Creative Services:* Priscilla McGee, Michi Morita, Jennifer Deauville, Marion Clifford; *Marketing:* Todd Thorson, Sean Mylett and Robert Johnson; *Manual Design:* John Verducci/Studio eM; *Package Artwork:* Mark Galarneau; *Package Design:* Michi Morita; *PR:* Melinda Mongelluzzo, Matt Atwood; *Special thanks to:* Tom Shiraiwa, Miki Takano, Robert Lindsey, Elisa Mathez, Jill Uebel, Robert Johnson, Tina Kowalewski, Lance Luu & Nate McIlvain Williams.

90-Day Limited Warranty

CAPCOM ENTERTAINMENT, INC. ("CAPCOM") warrants to the original consumer that this PlayStation® CD-ROM ("CD-ROM") from CAPCOM shall be free from defects in material and workmanship for a period of 90 days from date of purchase. If a defect covered by this warranty occurs during this 90-day warranty period, CAPCOM will replace the CD-ROM free of charge.

To receive this warranty service:

1. Notify the CAPCOM Consumer Service Department of the problem requiring warranty service by calling (408) 774-0400. Our Consumer Service Department is in operation from 8:30 a.m. to 5:00 p.m. Pacific Time, Monday through Friday.
2. If the CAPCOM service technician is unable to solve the problem by phone, he/she will instruct you to return the entire CD-ROM to CAPCOM freight prepaid at your own risk of damage or delivery. We recommend sending your CD-ROM certified mail. Please include your sales slip or similar proof-of-purchase within the 90-day warranty period to:

CAPCOM

Consumer Service Department
475 Oakmead Parkway
Sunnyvale, CA 94086

This warranty shall not apply if the CD-ROM has been damaged by negligence, accident, unreasonable use, modification, tampering or by other causes unrelated to the defective materials or workmanship.

REPAIRS AFTER EXPIRATION OF WARRANTY:

If the CD-ROM develops a problem after the 90-day warranty period, you may contact the CAPCOM Consumer Service Department at the phone number noted previously. If the CAPCOM service technician is unable to solve the problem by phone, he/she may instruct you to return the defective CD-ROM to CAPCOM freight prepaid at your own

POCKET FIGHTER

20 PTS.



POCKET FIGHTER

20 PTS.

risk of damage or delivery, enclosing a check or money for \$20.00 (U.S. funds only) payable to CAPCOM. We recommend sending your CD-ROM certified mail. CAPCOM will replace the CD-ROM, subject to the conditions above. If replacement CD-ROMs are not available, the defective product will be returned to you and the \$20.00 payment refunded.

WARRANTY LIMITATIONS:

ANY APPLICABLE IMPLIED WARRANTIES, INCLUDING WARRANTIES OF MERCHANTABILITY AND FITNESS FOR A PARTICULAR PURPOSE, ARE HEREBY LIMITED TO NINETY (90) DAYS FROM THE DATE OF PURCHASE AND ARE SUBJECT TO THE CONDITIONS SET FORTH HEREIN. IN NO EVENT SHALL CAPCOM BE LIABLE FOR CONSEQUENTIAL OR INCIDENTAL DAMAGES RESULTING FROM THE BREACH OF ANY EXPRESS OR IMPLIED WARRANTIES.

The provisions of this warranty are valid in the United States and Canada only. Some states and provinces do not allow limitations on how long an implied warranty lasts or exclusions of consequential or incidental damages, so the above limitations and exclusions may not apply to you. This warranty gives you specific legal rights, and you may have other rights, which vary, from state to state or province to province.



POCKET FIGHTER

20^{PTS.}



JOIN FIGHTERS EDGE. EARN KILLER STUFF.

Join the ranks of the world's fighting elite in Capcom's Fighters Edge program! Collect Fighters Edge proof-of-purchase points every time you buy a Fighters Edge game to earn all kinds of free, cool gear like a t-shirt, hat, skateboard, sunglasses or other killer stuff.

Membership sign up inside.
Check out: www.fightersedge.com

CAPCOM

www.capcom.com



CAPCOM ENTERTAINMENT, INC.

© CAPCOM CO., LTD. 1998 © CAPCOM U.S.A., INC. 1998 ALL RIGHTS RESERVED. Pocket Fighter is a trademark of CAPCOM CO., LTD. CAPCOM is a registered trademark of CAPCOM CO., LTD. Fighter's Edge® is a registered trademark of GamePro Magazine, the official magazine sponsor of the Capcom Fighters Edge promotion. Reproduction of the Fighter's Edge name/logo in whole or part without written permission by GamePro Magazine is prohibited. All Rights Reserved. QSound Technology is protected by U.S. Patent Nos. 5,105,462 and 5,208,860 and numerous foreign patents. QSound, Virtual Audio and the QSound logo are trademarks of QSound Labs, Inc.

Licensed by Sony Computer Entertainment America for use with the PlayStation game console. PlayStation and the PlayStation logos are registered trademarks of Sony Computer Entertainment Inc. The ratings icon is a trademark of the Interactive Digital Software Association. Manufactured and printed in the U.S.A. THIS SOFTWARE IS COMPATIBLE WITH PLAYSTATION GAME CONSOLES WITH THE NTSC U/C DESIGNATION. U.S. AND FOREIGN PATENTS PENDING.

